

PRODUCT DESCRIPTION



MADE IN GERMANY

AD 750+F

1 Chip-Color-Camera for endoscopic applications with Endo.Mode & Anti-Morie



www.4ci.com

AD 750+F

AD 750+F is an very advanced 1 CCD camera system for all endoscopic applications which is based on basic modle AD750.

Full digital processing gurantees ture color reproduction and high contrast. A high sensitive, high resolution 1/3 inch CCD ensures high clarity and sharp detailed images. Basic functions are preadjusted for easy and flexible use. The camera head (using the attached cap) and cable can immersed in disinfectant solutions for sterilization.



■ Camera Head control buttons

Via three freely programmed buttons on the camera head which are pre set by the suppliers. More convenient for surgical applications.

Button function setable 1 : Button A -Zoom In.

Button B- Zoom out.

Button function setable 2 : Button A- White balance.

Button B-Zoom in & out.

Button C function : Freeze

■ WB White balance

White Balance is done automaticaily by push button.

■ Endo. Mode

Most useful function for all endoscopic applications.

With A-B-C-D mode internal

Help the doctors to use different endoscopes from E.N.T , Arthroscope, Urology, Resectoscope, to Laparoscope etc according to different lense required by the different inspection and operation.

■ Anti-Morie Filter

By pressing Endo.Mode button three seconds, the Anti-morie function is activated when the video camera is connected with a flexible fiberscopes, the Anti-morie is not traditional electronical removing the net, but is a opitcal Anti-morie which has totally resolved the net of the different fiberscopes.

DIGITAL 1-CCD CAMERA-SYSTEM

Technical Data

Video system	PAL / NTSC	
CCD sensor	1/3" (440.000 pixel)752 (H) x 582 (V)	
Video resolution	470 TV-lines	
Shutter range	1/50 sec - 1/100.000 sec	
Sensitivity	0,9 lux (f=1,4)	
Outputs	2 x Y/C (S-VHS), 2 x VBS (VHS) , DVI	
Power supply	100 - 240 VAC	
Dimensions (WxHxD)	CCU	353 x 103 x 253 mm
	Head	33 x 35 x 83 mm
Weight	CCU	4,7 kg
	Head	115 g
Head	C-Mount thread, immersable high flexible cable: 3 meter	
Class / Type	1 / BF	
Manufactured and tested acc.	IEC 601-1 / CE EN 60601-1 93/42 ECC	

Accessories

TV-Adapter / Rigid endoscopes (with Quick-Lock)

Fixed focus length f: 18mm / f: 22mm / f: 24mm / f: 28mm / f: 35mm

Zoom f: 15 - 25mm / f: 25 - 40mm

Beamsplitter f: 25mm / f: 30mm

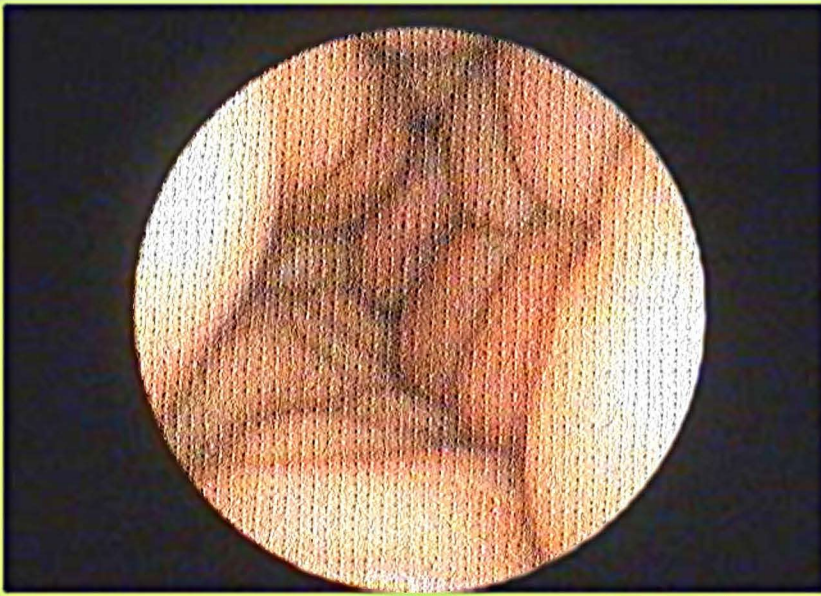
TV-Adapter / Flexible Fibre endoscopes

Fixed focus length f: 15mm / f: 21mm / f: 28mm
available for OES / Fuji / Pentax

Delivery contains

CCU, camera head with 3 meter cable
Mains cable
Y/C cable, BNC cable
User manual

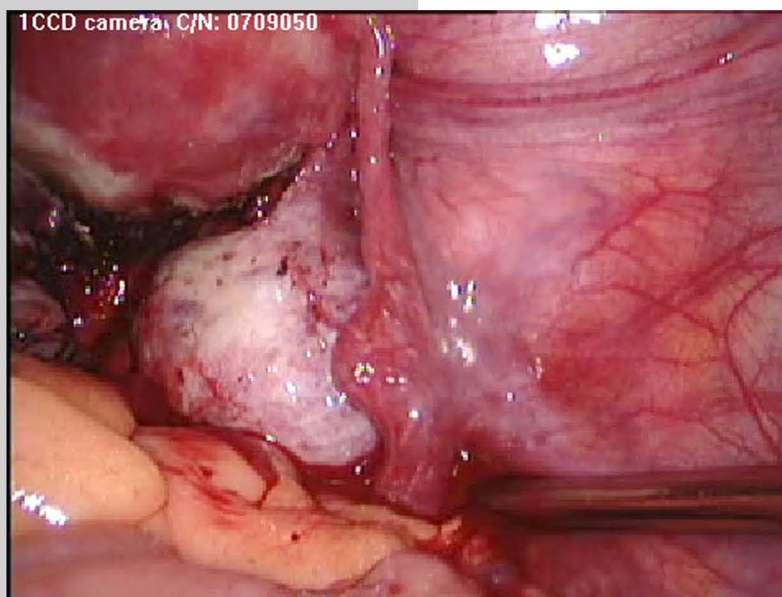




Without Anti-morie



With Anti-morie



Laparoscope operation demo