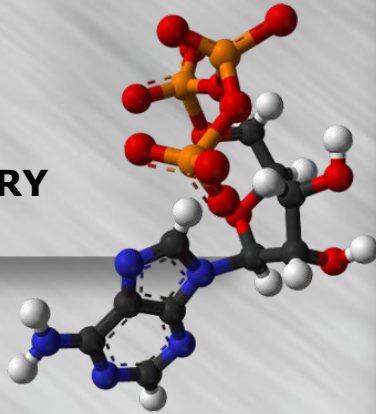




# CUBI-520

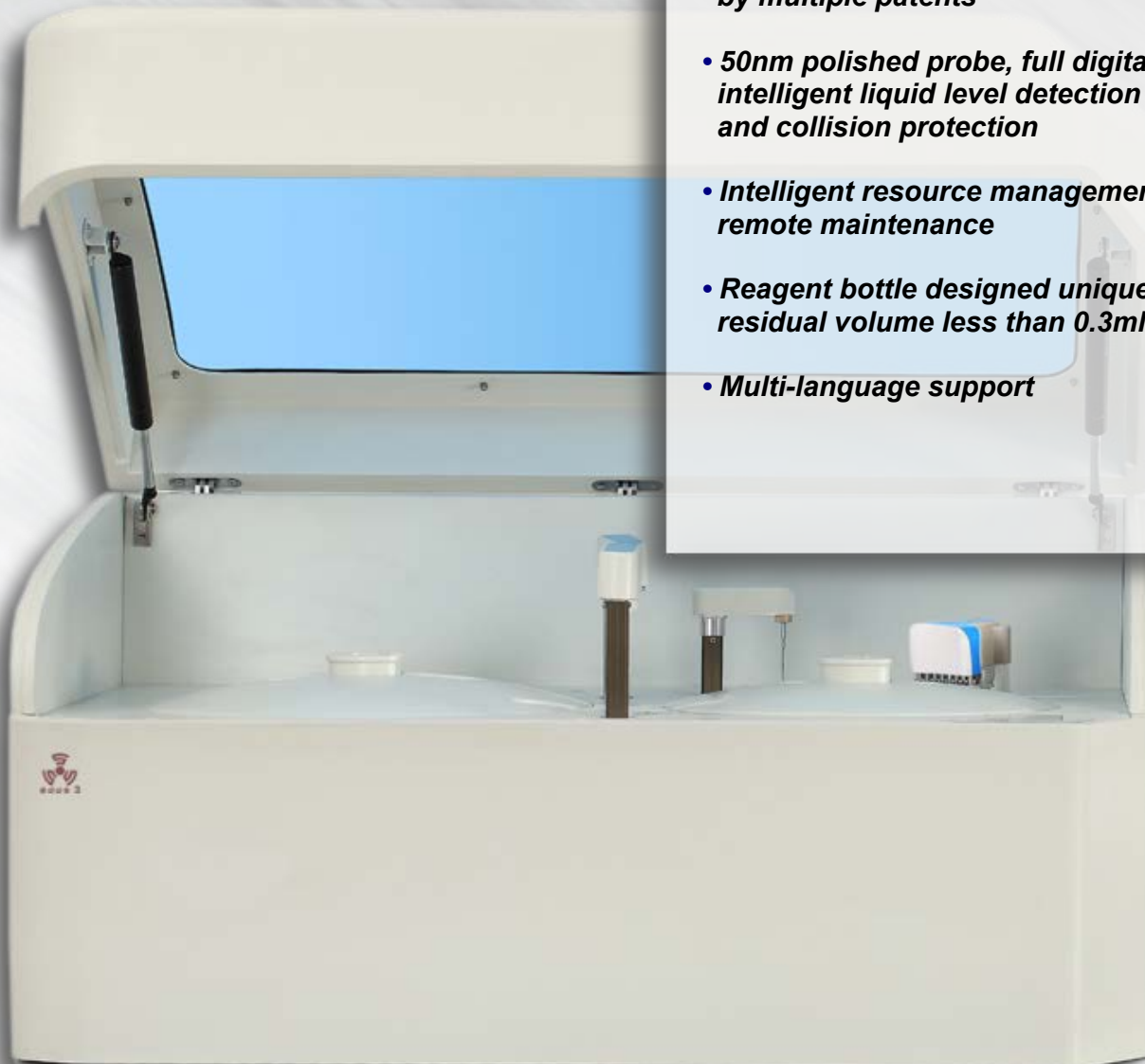
## Full automatic biochemistry analyzer

### BIOCHEMISTRY



- *Random access, discrete, fully automatic, STAT priority*
- *200T/H(single/double reagent)*
- *Friendly interface, easy operation*
- *Stable system supported by multiple patents*
- *50nm polished probe, full digital intelligent liquid level detection and collision protection*
- *Intelligent resource management, remote maintenance*
- *Reagent bottle designed uniquely, residual volume less than 0.3ml*
- *Multi-language support*

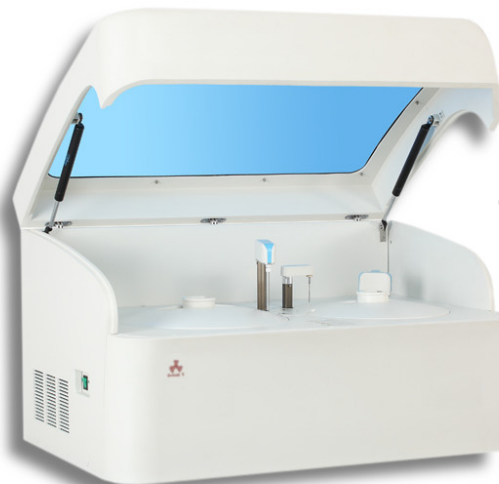
LABORATORY





# CUBI-520

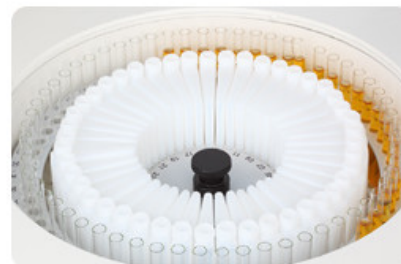
Full automatic biochemistry analyzer



Cod. **CUBI-520**

## Sample / Reagent system

- Syringe assembly innovatively designed extend the working life by 50%, accurate position.
- Unique square lead rail simple structure, accurate position, long working life and low break down.
- Liquid level detection and collision protection.
- Refrigerated reagent disk.
- Automatic washing both interior and exterior.



## Reaction system

- 120 recyclable cuvettes.
- 7-step auto washing and low carry-over.
- Thermostat technology that ensures a temperature of 37°C, the control temperature variation is  $\pm 0.1^\circ\text{C}$



## Mix system

- Unique square lead rail simple structure, accurate position, long working life and low break down.
- The surface of stirrer is polished to avoid liquid suspension and reduce cross-contaminations.



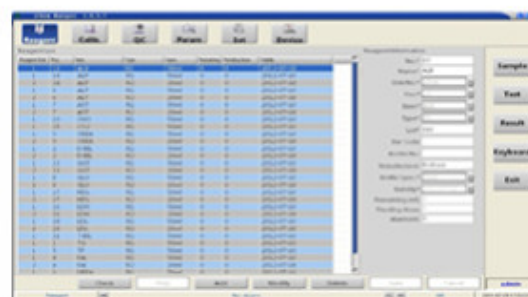
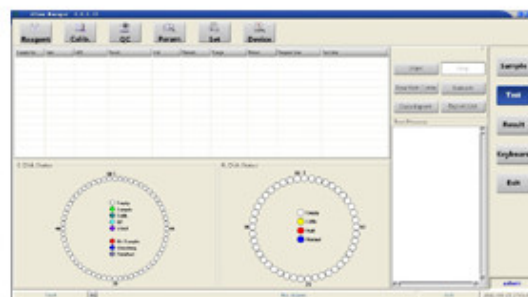
## Photometry system

- 20W/12V long life light source
- Reaction cuvette with resistance against acid and alkali
- Easy maintenance



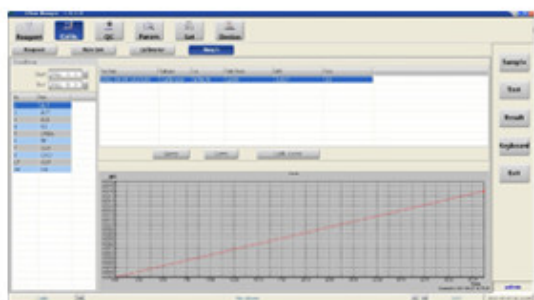
## Operating software

- Friendly interface and convenient operation.
- Real-time reaction curve.
- Support reaction curve data export.
- The position of starting cuvette can be freely defined, each cuvette can be used in balance.
- Real-time multiple alarm function.
- Retest support, automatic final result storage.
- Repeat test, automatic storage of each result.
- Multiple test results review (sample/item).
- Batch test results export.
- The test quantity can be calculated before testing, according to the current reagent volume.
- Reagent residual can be real-time monitored, analyzed and alarmed.
- Intelligent resource management.



## QC and Calibration

- Automatic calibration.
- Support Westgard multi-rule, L-J plot.
- QC position and calibration position can be defined freely.
- Support multiple QC request modes (Control liquid/Item).
- Support multiple QC test by composite control liquid.



## Technical Specifications

<b>System Function</b>	
<b>Throughput</b>	200 T/H (single/double reagent)
<b>Analysis method</b>	Two-point, end-point, kinetic
<b>Analysis item</b>	200 colorimetric items
<b>Sample system</b>	
<b>Sample position</b>	60, discretionary QC & Standard position
<b>Sample probe</b>	1 independent probe
<b>Sample cup specification</b>	Standard cup $\varnothing 12 \times 37 \text{mm}$
	Blood tube $\varnothing 12 \times 100 \text{mm}$
	Plastic tube $\varnothing 12 \times 100 \text{mm}$
<b>Sample volume</b>	2~100 $\mu\text{l}$ 0,1 $\mu\text{l}$ stepping
<b>Sample probe technology</b>	Liquid level detection and collision protection
<b>Sample probe cleaning</b>	Automatic washing both interior and exterior
<b>Reagent system</b>	
<b>Reagent position</b>	45, Refrigerated reagent disk
<b>Reagent probe</b>	1 independent probe
<b>Reagent volume</b>	10-500 $\mu\text{l}$ 0.5 $\mu\text{l}$ stepping
<b>Reagent bottle</b>	20ml, 50ml
<b>Reagent probe technology</b>	Liquid level detection and collision protection
<b>Reagent probe cleaning</b>	Automatic washing both interior and exterior
<b>Reaction system</b>	
<b>Reaction position</b>	120 optical cuvettes
<b>Cuvettes specifications</b>	5,8mm optical diameter
<b>Reaction volume</b>	180~500 $\mu\text{l}$
<b>Reaction temperature</b>	37°C, $\pm 0,1^\circ\text{C}$
<b>Mixing stirrer</b>	1 mixing stirrer
<b>Wastewater treatment</b>	Waste liquid level alarming
<b>Reaction cuvette cleaning</b>	7-step auto washing
<b>Optical system</b>	
<b>Light source</b>	20W/12V halogen lamps
<b>Spectrophotometry</b>	Reversed
<b>Wavelength</b>	340nm, 405nm, 450nm, 510nm, 546nm, 578nm, 630nm, 700nm (2 optional)
<b>Absorption range</b>	0~5.0 Abs
<b>Resolution</b>	0.0001 Abs
<b>Calibration and QC</b>	
<b>Calibration method</b>	1-point linear, 2-point linear, multiple point linear, non-linear method, Logit-tog4P Logit-Log5P, Spline, Exponential5p, Polynomial5p and Parabola
<b>QC method</b>	Real-time QC, days QC & day QC
<b>Control rule</b>	Westgard multi-rules, L-J plot
<b>Operating system</b>	
<b>Operating system</b>	Windows XP/ Windows 7
<b>Interface</b>	Standard RS-232
<b>Language</b>	Multi-language
<b>Working conditions</b>	
<b>Power supply</b>	AC110~220V, 50/60Hz, 600W
<b>Temperature</b>	15~30°C
<b>Humidity</b>	35-80%
<b>Water consumption</b>	7L/hour
<b>Dimensions</b>	1015x760x620mm
<b>Net weight</b>	97KG



**ESSE3** srl, Via Garibaldi 30  
 14022 Castelnuovo D.B. (AT)  
 Tel +39 011 99 27 706  
 Fax +39 011 99 27 506  
 e-mail [esse3@chierinet.it](mailto:esse3@chierinet.it)  
 web: [www.esse3-medical.com](http://www.esse3-medical.com)

