

ESSE-901A



SINGLE CHANNEL INTERPRETATIVE DIGITAL ECG MACHINE

FEATURES

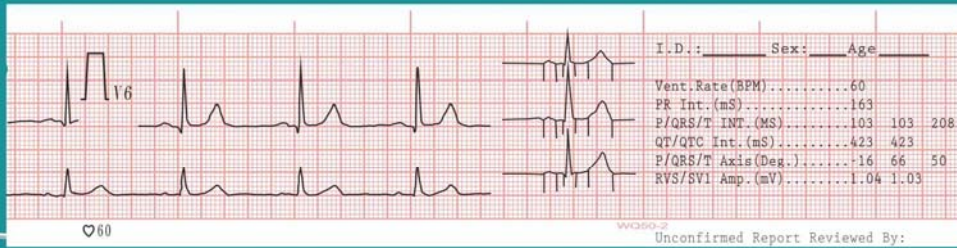
- Single channel digital ECG machine with measurement and interpretative
- Design of all digital, digital filtering , auto baseline and adjustment
- Simultaneous 12 leads acquisition , real time display ECG waveform
- 3,8'' LCD screen (graphic 320x240) to display operation status and HR
- Multiple printing mode (Manual – Auto – Ref-Lead) , 50mm x 20 ml roll paper
- High resolution hotspot output system, simultaneous ECG wave , lead , paper speed, gain and detailed data
- Built-in RS-232 interface, save/copy/communication functions (optional ECG software and USB)
- AC/DC power with built-in rechargeable Li-Ion battery
- Design of modularization (under ECG workstation) if connected with PC for saving ECG records
- 8 patients record storage





ESSE-901A

Single channel digital ECG machine



★ Specifications

Lead	Standard 12 leads
Acquisition	Simultaneous 12 leads
Resolution	18 bit/1000Hz
Operation mode	Manual mode, 3 Auto modes (with measurement report, automatic Analyze is optional)
Filter	AC, EMG filter
Drift filter	Anti-Drift System
CMMR	> 60dB > 100dB(with AC filter)
Input circuit	Floating, protection circuit against defibrillator effect
Input circuit current	≤ 0.1 μ A
Input Impedance	> 50MΩ
Patient current leakage	< 10 μ A
Calibrating voltage	1mV ± 2%
Voltage Tolerance	± 500mV
Time constant	> 3.2s
Frequency response	0.05 ~ 150Hz
Noise level	≤ 15 μ Vp-P
Threshold	≤ 20 μ V
Paper speed	25,50mm/s(± 3%)
Sensitivity	Auto, 2.5, 5, 10, 20mm/mV
Recorder	High resolution thermal printer
Paper specification	50mm × 20/30m, roll
LCD display	Displays menu, operation status and ECG waveform
Safety level	IEC60601-1 class I, type CF
Power supply	AC 110V/220V/85-265V, 50/60Hz ± 1Hz; 30VA DC10. 8V(1500mAH)rechargeable Li-ion battery
Dimension	288mm × 204mm × 60mm



■ Standard Accessory



ESSE 3 Via Garibaldi 30
14022Castelnuovo D.B. (AT)
tel +39 011 99 27 706
fax +39 011 99 27 506
e-mail esse3@chierinet.it
web : www.esse3-medical.com

