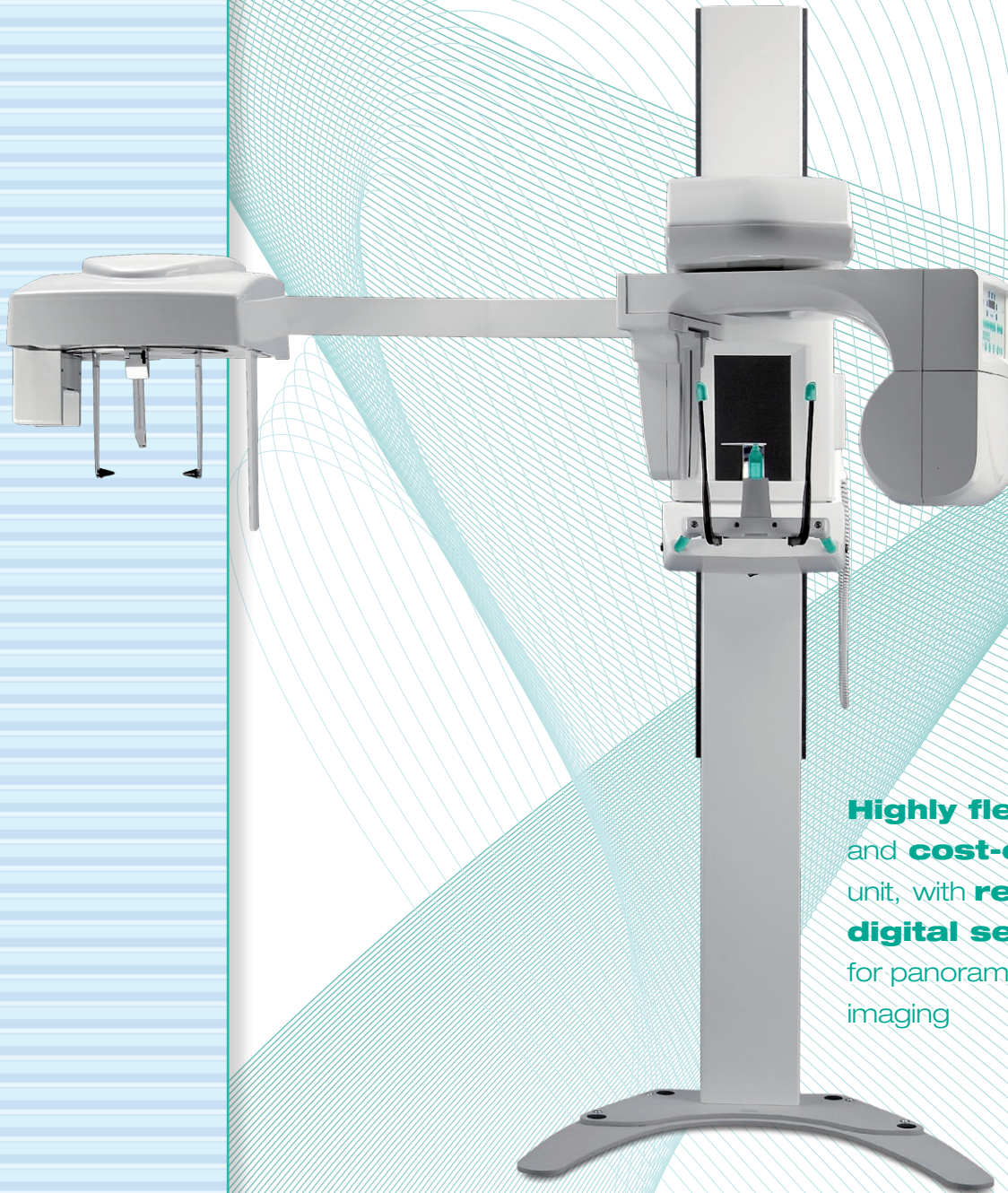


TOOTH-CEPH DGM Digital Dental Panoramic Unit



Highly flexible
and **cost-effective** X-ray
unit, with **removable**
digital sensor to be used
for panoramic or cephalometric
imaging



BMI
BIOMEDICAL INTERNATIONAL

Dental X-ray Unit with a new high resolution and low noise imaging sensor for clear and sharp images. Two units configuratios: **TOOTH-CEPH DGM** featuring panoramic and cephalometric examinations and **TOOH-PAN DGM** limited to only panoramic applications, with possible field upgrade to the Ceph version.

Technical features

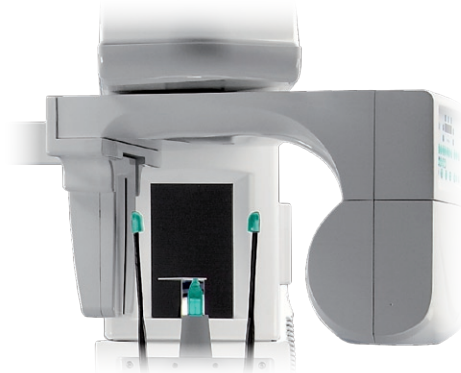
- Constant potential high-frequency multi-pulse X-ray generator
- Focal spot: 0.5 IEC 336
- Voltage at anode: 61 - 85 kV
- Current at anode: 4 - 10 mA
- Exposure time: panoramic 15 s maximum, cephalometric 9 to 12 s
- Heating load management for minimum waiting time
- Source image distance: panoramic 51 cm, cephalometric 165 cm
- Dental arch vertical magnification: 27%
- Cephalometric magnification: 10%
- Vertical travel of reference point for occlusal plane: 90 - 176 cm
- Panoramic projections:
 1. Adult standard with constant vertical magnification of the dental arch
 2. Child panoramic
 3. Left-side dentition
 4. Right-side dentition
 5. Anterior dentition
 6. TMJ in normal occlusion and fully open
 7. Frontal view of maxillary sinuses
- Cephalometric projections:
 1. Antero Posterior (AP)
 2. Latero Lateral (LL)
 3. Carpus
 4. Sub-Mento Vertex (SMV) in AP mode
- Accessories for positioning: bite block, chin rest, optional temporo-mandibular adjustable resting bars, cephalostat and hand support for carpus
- Positioning references: 3 laser beams for the Frankfurt, mid-sagittal and canine-lateral planes
- Carriage positioning: motorised horizontal travel, elctromagnetic locking system for vertical movements
- Weight: panoramic 160 Kg, cephalometric 205 Kg
- Free-standing base unit (optional)

Digital receiver

- Removable CCD Sensor
- Image height 22 cm
- Spatial resolution > 5 line pairs per mm
- Acquisition dynamics 12 levels
- Imaging area of 15 x 30 cm on Panoramic and 22 x 24 cm on Ceph
- USB interface

Removable CCD imaging sensor, for both:

panoramic



and

cephalometric imaging



BMI
BIOMEDICAL INTERNATIONAL



ESSE 3 Via Garibaldi 30
14022Castelnuovo D.B. (AT)
tel +39 011 99 27 706
fax +39 011 99 27 506
e-mail esse3@chierinet.it
web : www.esse3-medical.com

