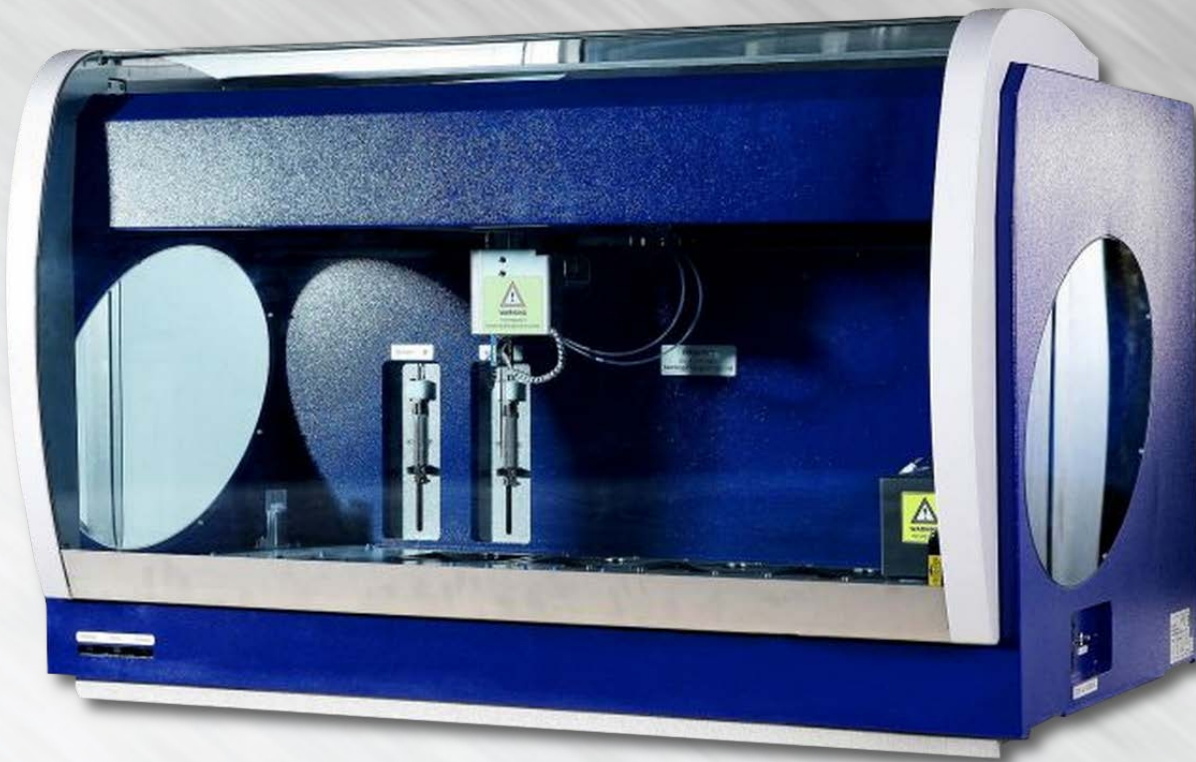




J 9; !&\$\$\$\$

: i ``mUi hca UhYX
9 @G5 `dfcWYggcf



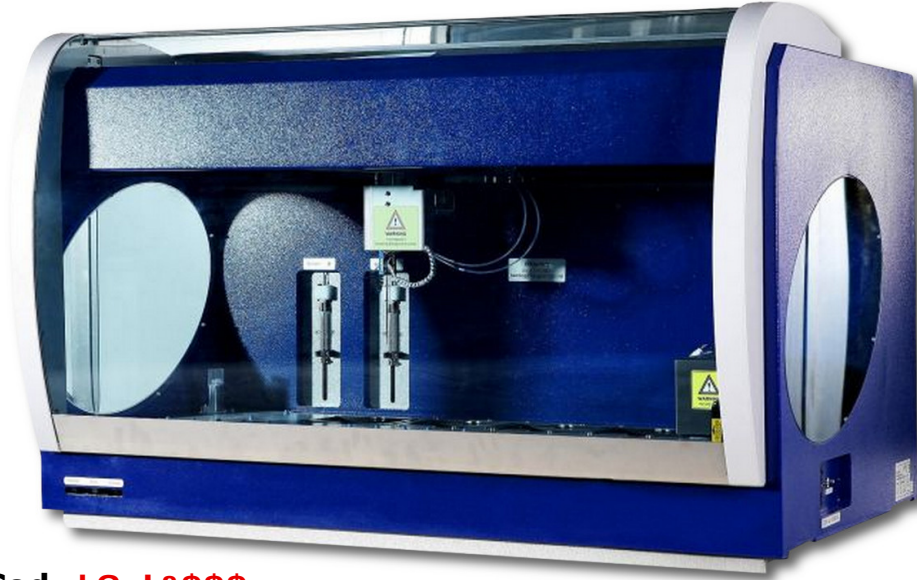
LABORATORY



J 9; !&\$\$\$\$

... : i ``mUi hca UHYX `9@=G5 `dfcWggcf

**with Washer
& Reader System**



Cod. J 9; !&\$\$\$\$

VEG-2000 Elisa Processors is fully automated Fourplate ELISA processing system, capable of sampling, incubation, washing and data processing. It is complete solution for your IVD ELISA assays. The system combines a high precision pipetting unit with stable incubators and efficiency washers and photometer unit.

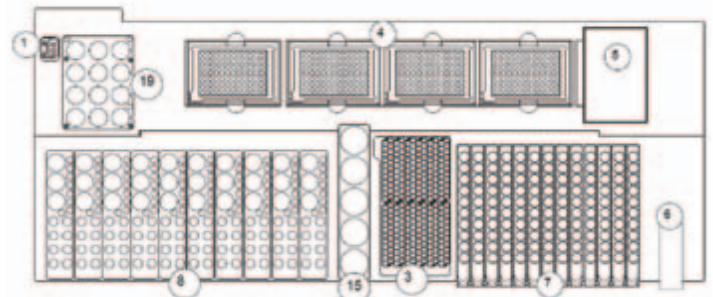
VEG-2000 Modularity

- 1 Robotic hand.
- 2 Pipetting probe, 1ul stepping (1000ul volumes).
- 169 Sample rack, 264 Dilution rack.
- 10 special reagent racks, 2 general reagent racks.
- 4 units 96 well microplate (pipetting, incubator, reading).
- 1 unit independent washer & reader (two 8 nozzle manifolds).



Modularity Composition

- 4 microplate ,169 Sample rack, 264 Dilution rack.
- All-in-one microplate reader and washer.
- 10 special reagent racks, 2 general reagent racks.
- Robotic precision probes and automated washing system.



Washer

Two 8 nozzle manifolds. Automatic liquid level sensor detection. Separate aspiration and dispense probes prevent cross contamination.

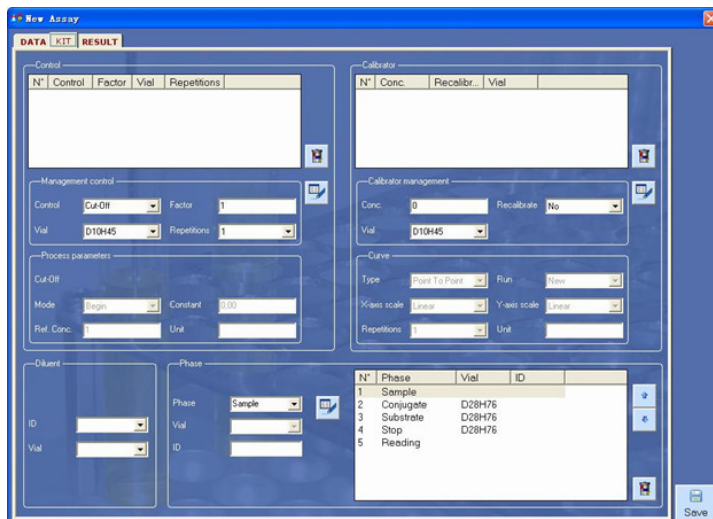
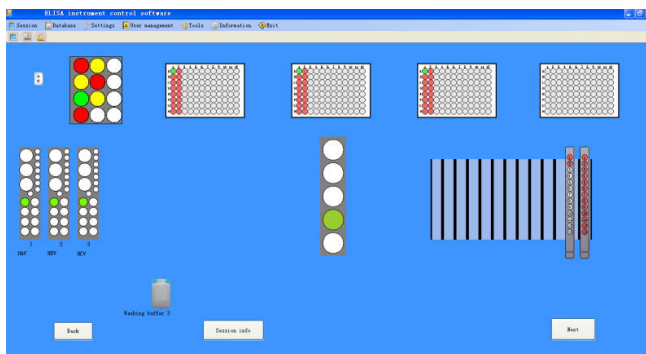
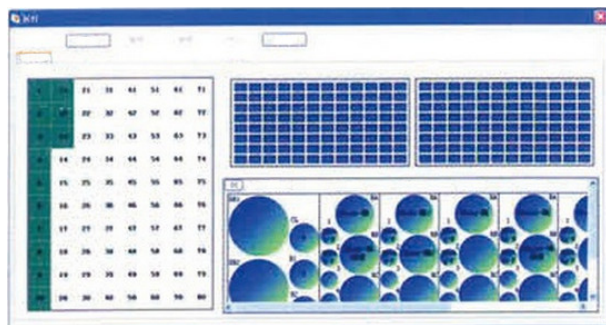
Reader

8 independent photometric channels.
Wavelength range 400-700nm.
2 precision filters (450,630nm),
2 more available on request.



User-friendly Software

LIS system available (laboratory information system)
Large data storage capacity. Professional service software
monitor process on line status.





Testing Range

- ✓ TORCH SERIES Toxo, RV, CMV, HSV etc.
- ✓ HEPATITIS SERIES HAV, HBV, HCV, HDV, HEV etc.
- ✓ VENERAL SERIES HIV, TP, MP, CT, etc.
- ✓ THYROID AUTOIMMUNITY SERIES T3, T4, FT3, TSH etc.
- ✓ ENDOCRINE SERIES E2, E3, LH, FSH, HCG, Pro, PRL etc.
- ✓ TUMOR MARKER SERIES CEA, AFP, PSA, F-PSA, CAL 9-9, CA 15-30, CA 242.

TECHNICAL FEATURES

Model	VEG-2000	
Sample pipetting unit	Sample rack	169 sample tubes(12 mm)
	Primary sample tubes	12x75mm
	Pipetting	8ul~1000ul, (10ul) CV<5%
	Time to dispense	15 minutes (typical)^100ul of 96 reagents to plate from sample tubes or dilution tubes.
	Dispensing system	1 aspirating-dispensing probe with X-Y-Z movement; dilution system with a syringe of 1000ul, continuous flow washing station.
Reagent pipetting unit	Reagent racks	10 special reagent racks,2 general reagent racks
	Removable trays	modular racks to hold calibrators, controls and reagents for 10 methods on line
	Pipetting	8ul~1000ul,1ul stepping,
	pipetting precision	(100ul)CV≤0.2~1%
	Time to dispense	2 minutes(typical)^100ul of 96 reagents to plate from reagent bottle
Washing unit	Programmable	Yes(options & parameters)
	Wash containers	4 wash buffers at 2.0L, with level-sensing
	Waste containers	10L with waste full sensor
	Washing system	two 8 nozzle manifolds, one to dispense and the other one to aspirate;
	Washing residual	<2µl
Reading unit	Reading system	8 independent photometric channels with mono and bi-chromatic reading capability
	Photometric range	0.000 ~3.000 OD
	Spectral range	400-700nm
	Optical filters	2 precision filters (450and 630nm); 2 more on request (4 filters max, 400-700nm)
	Reading inaccuracy	Inaccuracy ±1% from 0.000 to 1.500 OD, ±2% from 1.500 to 3.000 OD
Incubation unit	Incubators	4 independent units
	Programmable	Yes
	Temperature range	RT to 45 °C
	Temperature accuracy	±0.2°C
	Adjustment step size	±0.1°C
Software unit	Software system	Windows XP or Windows 7 or above, LIS system available
	Function application	work list set up, patient reports and result filing; calibration curve storage for each carried out test
	Data reduction	cut-off (qualitative)
Physical Specification	Dimensions	1130 x 750 x 770mm (WxDxH)
	Power Supply	AC110/220V + 10%, 50/60Hz
	Weight	120kg
	Consumption	350W



ESSE3 srl, Via Garibaldi 30
14022 Castelnuovo D.B. (AT)
Tel +39 011 99 27 706
Fax +39 011 99 27 506
e-mail esse3@chierinet.it
web: www.esse3-medical.com

